



Meeting Point International

A PLACE WHERE I BELONG

“A journey to discovering one's infinite value”

SOCIAL REPORT 2024

3 **Who we are**

- 4 • The need of belonging
- 5 • Vision, Mission, Method
- 6 • Our organization structure
- 7 • Where we work, Our beneficiaries

8 **Our impact**

10 **Areas of intervention**

- 10 • Health and wellbeing
- 12 • Education and Child Support
- 14 • Protection
- 15 • Livelihood
- 16 • Smart agriculture, Climate change and clean energy
- 17 • The inauguration of the “Tennis Court”



- 18 **Total funds 2024**
- 19 **Main goals for 2025**

20 **Stories of Hope**

21 **Our contacts**

WHO WE ARE

Meeting Point International (MPI) is a non-government organization registered with the Uganda NGO board. Active since October 1992, we primarily work in the slums of Acholi Quarter and Naguru in Kampala.

MPI has become known for its unique approach to support people living with HIV/AIDS, especially women. The awareness that **the infinite value of every person is greater than any life hardship** helped us to build a lasting methodology that goes far beyond physical support. That's why people who are sick, poor, war victims, orphans, mental ill or aged, can find in MPI an everyday companionship.

MPI members meet weekly and engage in various activities including medical care, counseling, trainings, home visits, tours and school fees support for their children. Dances, drama and songs also take place as an expression of overflowing happiness and peace of the heart.

All these activities are just instruments to tell the person: **"You are greater than anything I can give you"**. The soul of all our work is this educational journey.



THE NEED OF BELONGING

The greatest need of a human being is the need of belonging, which gives stability and certainty in all aspects of life. Meeting Point International has discovered that with a belonging you can approach others while taking into account their reality and you can be able to truly embrace him/her whichever are the differences that separate you.

In an environment where this belonging ceases to exist, where external circumstances deny this or are not clear, there is a possibility of violence and war in all aspects. MPI avails conditions where adults, youth and children can feel loved and have a link to someone, a relationship, a bond that they can turn to.

The value of the person is only possible when paying attention to something greater. The support we give is an instrument to tell these people that they have a value and that they are responsible for it.

A key lesson we have learnt through the years has been the importance of introducing a person to whom the children and their parents can refer to; someone who accompanies them and is present for them more than just implementing a project that doesn't touch the very depth of hearts.

The person who belongs becomes protagonist because he receives a face and receives a consciousness that unites him with the reality. He becomes the lord of the reality not because he posses it himself, but because he discovers the belonging to someone else. Belonging to a design that is not yours, that is to say belonging to somebody else, you become free.

Rose

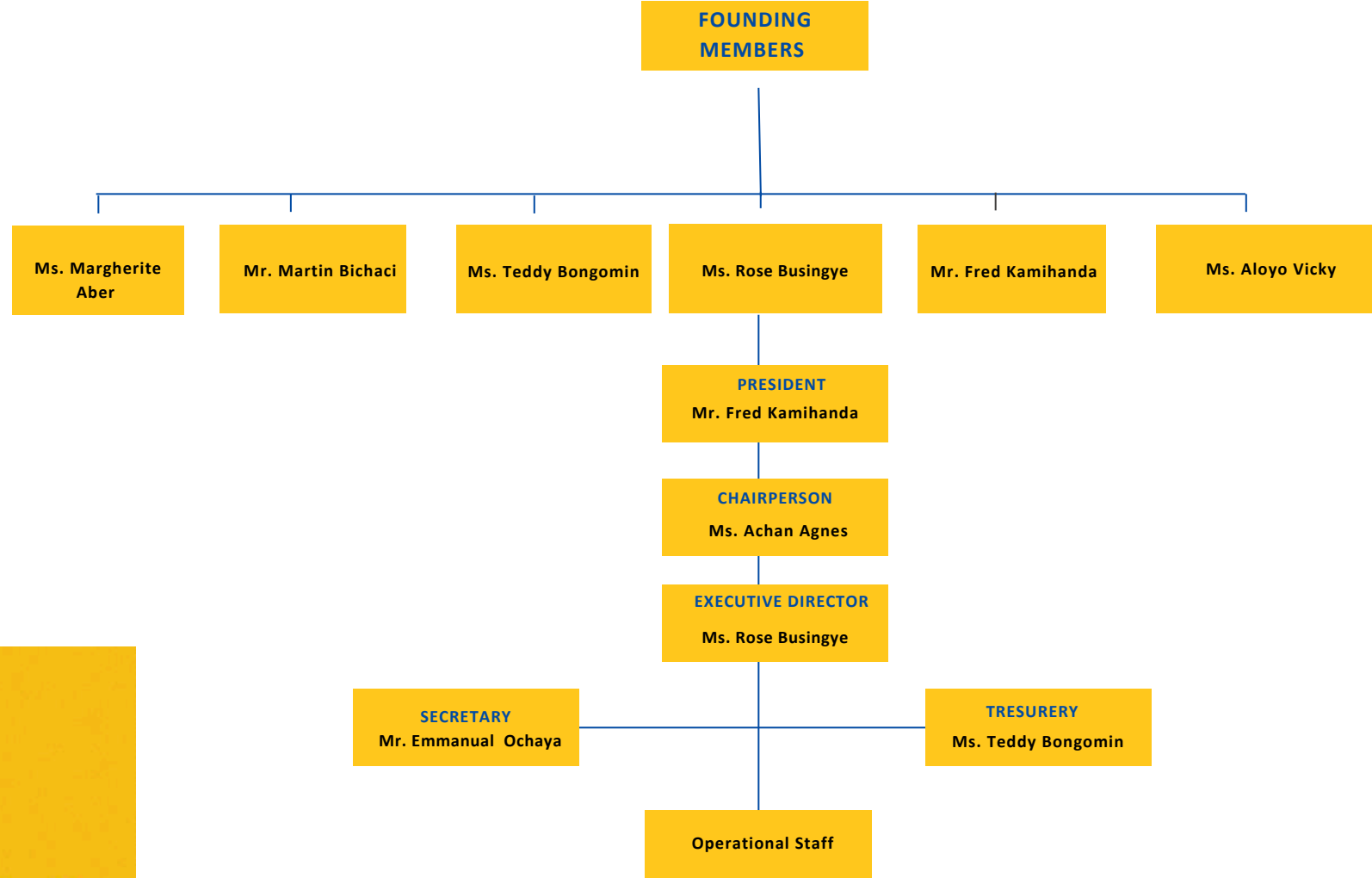


VISION

For every person to discover their infinite value, through a journey towards their human development and that of their communities.

MISSION

Meeting Point International aims to continuously accompany every person and community, prioritising the affected and Infected people with HIV/AIDS, promoting education at all levels and committing to poverty alleviation.



Meeting Point International (MPI) is a dynamic organisation with a team of 36 staff members, led by the Executive Director and the Technical Advisor. This team works collaboratively to ensure the smooth operation of the organisation, driving its mission forward. With the support of MPI's beneficiaries and the guidance of the Executive Director, the staff are empowered in their journey of self-discovery, gaining a deeper understanding of their inherent value.

Meeting Point International

OUR METHOD



1. To start from the **infinite value** of each person. Each person is unique and unreplicable, not defined by their limitations, current or past circumstances, sickness, poverty, richness or even death.

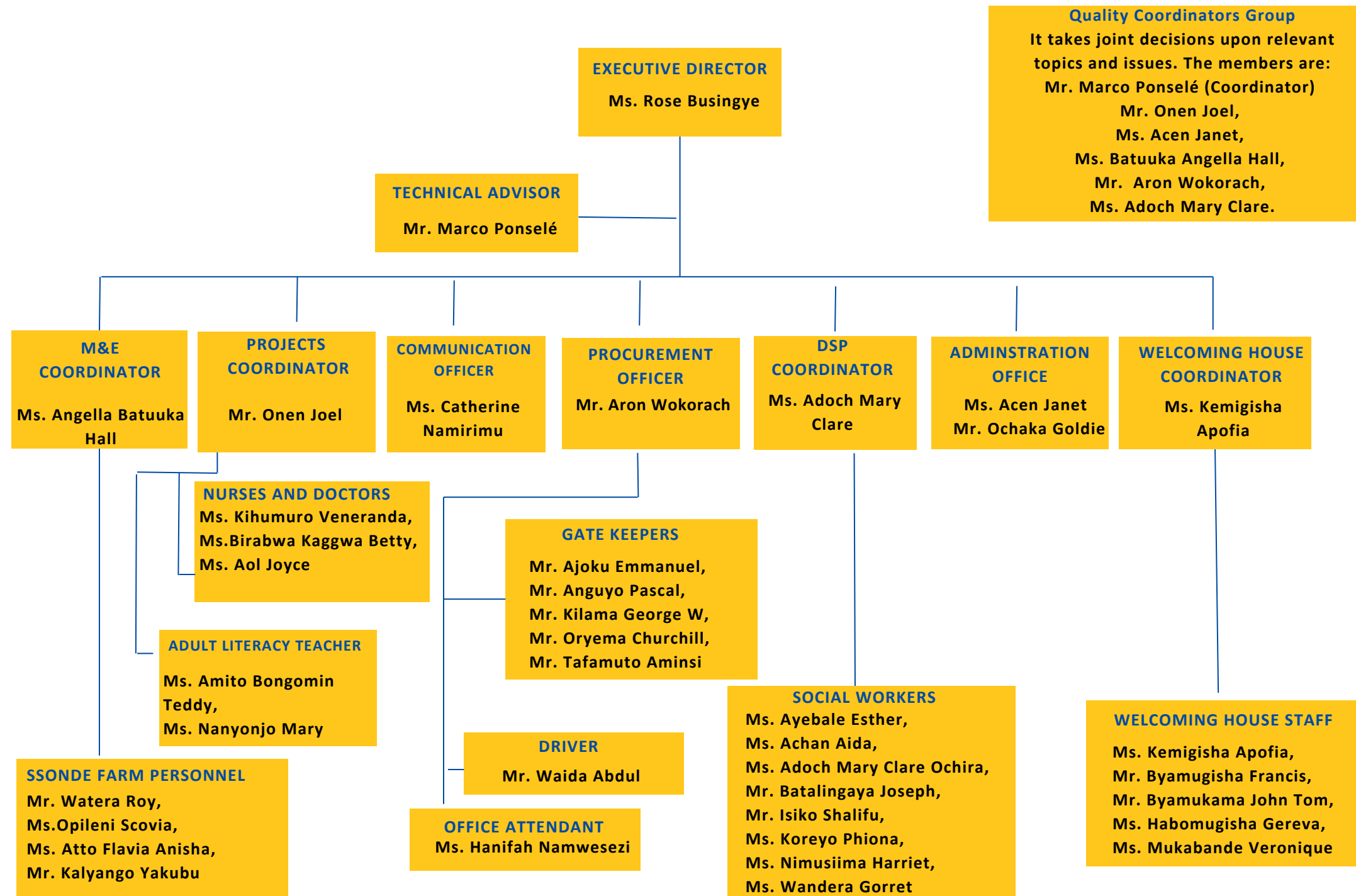
2. To accompany each person in the discovery of their infinite value, through a **relationship** in which one **discovers** they are important and through creating simple communities where one can **belong**.

3. Through companionship, each person can become **free**, that is to be themselves and express themselves.

4. When one discovers their infinite value and becomes free through this companionship, one becomes **responsible** for their value and thus the **protagonist** of their development and that of their communities.

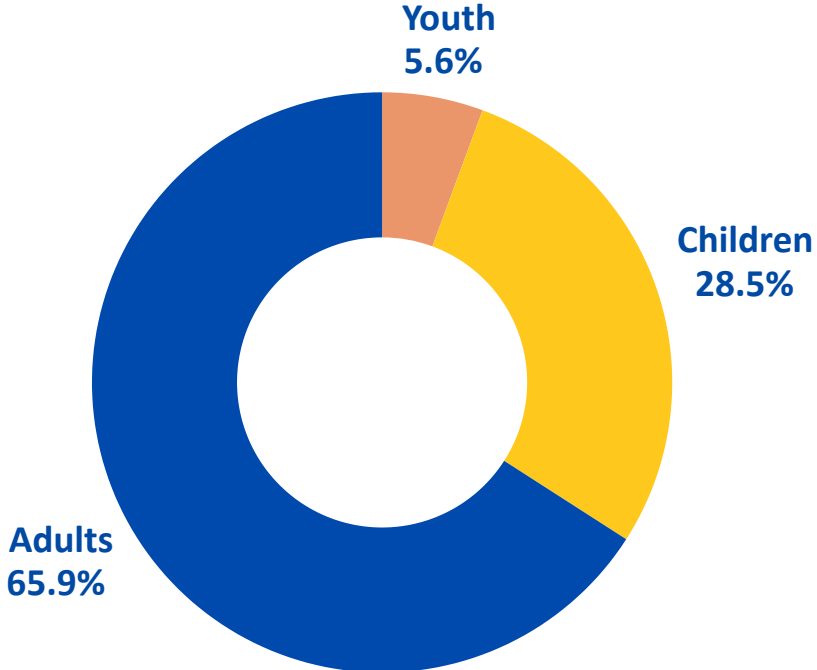
The activities we do are an instrument to tell each person that they are a value and that they are responsible for themselves.

OUR ORGANISATION STRUCTURE



WHERE WE WORK

The slums of Naguru and Kireka, home to approximately 68,000 people, are well known for the congested small houses of 1 or 2 rooms with extended families of more than 7-10 people most of which are headed by single mothers and HIV/AIDS victims who struggle to provide for their families through doing casual work like selling bananas, mangoes, and greens on the streets of Kampala. In this way they earn an average of €1.80 per day. Men, mostly drunkards, HIV positive and unemployed, relinquish their responsibilities to the women with minimal to no involvement at all, in ensuring the safety, nurture or provision for the family. Without access to economic resources and agency for the women in these communities, the low male caregiver involvement in child upbringing, coupled with high burden of care for the women, leave the children and youth in these communities more vulnerable to school dropout, delinquency, violence and increased risk of HIV infections.



OUR BENEFICIARIES

Meeting Point International operates in the slums of Kireka and Naguru, supporting households in extreme poverty, where women, often as sole breadwinners, face compounded challenges, including high HIV prevalence. **MPI directly impacts 3.180 individuals:** 1.408 women, 688 men, and 1.084 (youths and children), with a broader reach extending across numerous households.

The communities served by MPI, such as the Acholi Quarter in Kireka, are home to many Internally Displaced Persons (IDPs) from Northern Uganda, primarily of Acholi ethnicity. These individuals fled decades of violence tied to the Lord’s Resistance Army, enduring trauma such as kidnapping, sexual violence and displacement. The stigma surrounding HIV further isolates many women, leaving them powerless and marginalized in their families and society.



OUR IMPACT



HEALTH AND WELL-BEING

MPI supported 2,300 beneficiaries through comprehensive medical, mental health, and physical well-being initiatives:

- 1. Medical treatment and Referrals:** 2,000 medical cases and services were managed across MPI's clinics and partner hospitals. 206 beneficiaries received medical referrals to specialized healthcare facilities;
- 2. Psychosocial and Recreational activities:** 350 beneficiaries accessed mental health care through psychosocial support programs, while 200 women and 805 youth engaged in recreational activities to promote community bonding and improve emotional well-being;
- 3. Physical exercise/Yoga:** 350 beneficiaries participated in physical exercise and yoga sessions to enhance their overall health and wellness;
- 4. Home visits:** 463 households were reached through home visits, offering personalized care and follow-ups.



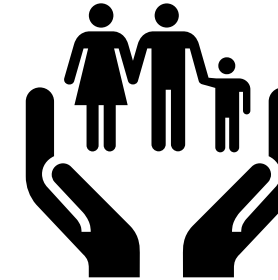
EDUCATION AND CHILD SUPPORT

1. Educational Support and Scholarships

- MPI supported a total of 1019 students, categorized as follows:
 - 561 in nursery and primary schools;
 - 346 in secondary schools;
 - 55 in vocational and training institutions;
 - 20 in universities.

2. Supplementary Support

- 15 children attended remedial classes to improve academic performance;
- 528 beneficiaries were supported through school visits to monitor progress and address challenges;
- Provided 70 children with scholastic materials to facilitate learning.

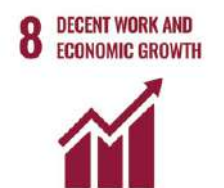


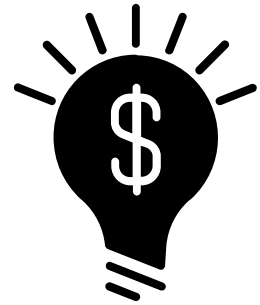
PROTECTION

Welcoming House: 65 Children supported under child protection at the Welcoming house;

Child protection dialogues: 450 women participated in child protection dialogues in Kireka and Naguru.

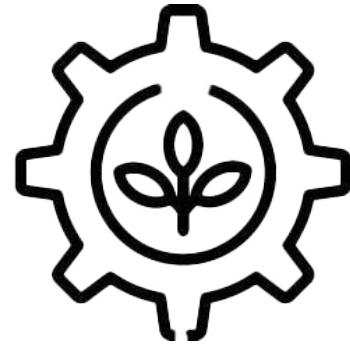
With its areas of intervention, MPI touches 9 “Sustainable Development Goals” (SDGs)





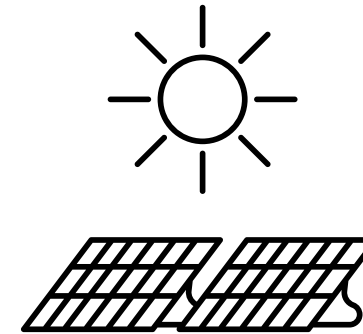
LIVELIHOOD

1. **Village Savings and Loans Associations:** 370 participates supported in Village savings and loans associations (VSLA);
2. **Adult Literacy:** 80 women and men supported with adult literacy classes;
3. **Apprenticeship:** 4 youth supported in apprenticeship training.



SMART AGRICULTURE

Agricultural trainings: 80 youth and 96 students supported through agricultural trainings and scale up for agribusiness development at MPI Ssonde Mixed Farm; Part of MPI Ssonde Mixed Farm's agricultural production is secured to support Welcoming House.



CLIMATE CHANGE AND CLEAN ENERGY

Installation of solar panels at the Welcoming House, modification of energy-saving stoves and purchase of gas cylinders for cooking and ensure long-term sustainability.



AREAS OF INTERVANTION

HEALTH AND WELL-BEING



Medical treatment and referrals

During 2024, MPI's two clinics in Kireka (Acholi district) and Naguru, which are staffed by three dedicated nurses, addressed common health conditions, including malaria, diabetes, hypertension, flu and respiratory infections. Through treatment and prevention education, it was possible to respond to outbreaks like red eye disease. MPI also stocks essential medications for chronic and acute conditions such as HIV/AIDS, heart problems and cancer. Moreover, critical cases were referred to specialized hospitals, such as St. Benedict Medical Centre and St. Francis Nsambya Hospital, ensuring advanced care for complex health needs.

Community and health sensitizations

MPI has conducted weekly health awareness sessions with women from Kireka and Naguru, focusing on:

- Nutrition, hygiene, cleanliness and the importance of vaccinations;
- Adherence to prescribed treatments for chronic illnesses, particularly HIV/AIDS, diabetes and hypertension;
- Education of patients on the risks of prematurely discontinuing medication after symptom relief;
- Provision of free sensitization, training and monitoring for patients with chronic conditions.



Psychosocial and recreational activities

Music, dance, and drama served as powerful tools for expressing culture and tradition, helping to deepen personal identity and cultivate a strong sense of belonging. These activities, held bi-weekly at our cultural centres in Kireka and Naguru, played a vital role in enhancing the mental well-being of our 2096 women & men.

During the second quarter, a trip to Jinja for some children from the Welcoming House was organised. Moreover, in October, 200 women, men and students participated to a recreational trip to Nairobi (Kenya). The theme of the journey, "Come and join our happiness," brought people together through a variety of enriching activities designed to inspire joy and connection.



9



Home visits

In 2024, MPI remained dedicated to supporting individuals affected by illness, particularly those living with HIV/AIDS, through hospital and home visits. A total of 463 home visits were conducted by MPI members and social workers, providing emotional support and reminding patients they are part of a caring community. These visits helped reduce isolation, foster a sense of belonging and reinforced the importance of community care in the healing process, with social workers offering empathetic and personalized support to each patient.

EDUCATION AND CHILD SUPPORT

“Education does not only take place in the classroom, it does not only mean understanding mathematics, but we truly educate when we connect the other to the infinite, when we allow the other to discover its precious content and that of others”.

Rose

Provision of school fees and scholastic materials for children

In 2024, MPI supported the educational needs of over 1000 vulnerable children, thanks to the generous contributions of both institutional and private donors. In partnership with parents and guardians, MPI played a central role in guiding the children's academic growth and overall development.

Many of these children were enrolled in Luigi Giussani Pre-Primary, Primary and High Schools, which followed the same educational approach used by MPI in its women's programs, ensuring a seamless learning experience. The success of this approach led to increased enrollment from the wider community, reflecting the effectiveness of MPI's educational model.

MPI also extended support to primary, secondary, and vocational students attending other partner schools. Additionally, 70 children were provided with scholastic materials, ensuring they had the resources needed for their education.

Supporting students with remedial classes

MPI supported children from the Welcoming House who were facing academic challenges, providing assistance throughout the year. This support included coaching and private classes tailored to their school curriculum. The beneficiaries primarily came from Mivule and Clevers Origin Primary Schools, with specialised classes conducted on Saturdays.



Luigi Giussani Pre-Primary and Primary School (LGPPS) also provided special Accelerated Literacy classes for children identified as needing additional support. Social workers were tasked with monitoring the progress of these children across various schools. LGPPS successfully reached a significant number of children through this initiative.

Conducting School visits

MPI did not only covered the school fees and provided scholastic materials for the children, but actively supported them through regular school visits. During these visits, social workers assessed and nurtured the overall well-being of the children, focusing on both their academic progress and psychosocial development.

A key activity carried out during the school visits was the class meetings at Luigi Giussani Pre-primary & Primary School and Luigi Giussani High School. These meetings allowed the social workers to gain a deeper understanding of each child's school life, enabling them to offer tailored support. Through these visits, MPI ensured that children were accompanied and supported during both the challenging and joyful times of their educational journey.



PROTECTION

MPI is committed to ensure presence and support for its vulnerable beneficiaries, being a continuous point of reference for women, men and children. To accompany its beneficiaries everyday and help them in their daily challenges, MPI carries out different initiatives focused on child protection, legal support and gender-based violence interventions.

The Welcoming House

MPI operates the Welcoming House (WH) in Kitintale, a safe home for orphans and vulnerable children. Currently, the facility cares for 65 children and young people: some of these children have been directly affected by HIV/AIDS and lost their parents, while a few come from families unable to provide them with emotional, financial, or health support. Usually, these vulnerable children are brought to the WH by the police, while others are found alone on the streets of Kampala.

The WH aims to create the context of a family, offering to these children a normal condition of life, through the stable presence of dedicated adult caregivers, who represent their emotional and educational point of reference. The main aim is to accompany these children along their growth path, making sure that they are properly taken care of. MPI, with the direct support of Auntie Rose and a dedicated social worker, look after every child, by carefully listening to them, observing their behaviours, identifying the specific needs of each child, understanding their strengths and weaknesses and being supportive in the daily challenges they face.

MPI has been working with a former probation officer from the Ministry of Labor, Gender, and Social Development to process the necessary documents to finalize the legal recognition of the WH. This step will create a more systematic approach to safeguarding the children from harm. Thanks to the contribution of its donors, MPI is able to cover part of these children's needs, like provision of food, clothes, hygiene and sanitation, medicines, school fees and scholastic material for formal education. MPI is also responsible for carrying out all the required bureaucratic procedures to acquire and obtain the proper legal documentation for every child, such as birth certificates and national ID cards, and it will be committed to always ensuring privacy and transparency in handling each child's legal documentation. For many of the children, the WH is not just a place to stay, it is Home. As young adults, they are welcome to remain until they are ready to stand on their own, start a family, or find their own path in life. The bonds formed at the WH remain strong forever, no matter where life takes them.



LIVELIHOOD

MPI carried out livelihood activities with its beneficiaries to support their economic growth and empowerment. These initiatives are meant to help our beneficiaries improve their entrepreneurial capacity to become self-sufficient.

Village Savings And Loans Association (VSLA)

In 2024, MPI conducted a refresher training for social workers and Village Savings and Loans Associations (VSLA) members to enhance their skills in managing savings groups. The eight VSLA groups, each with around 30 members, met weekly to save, access low-interest loans and invest in income generating activities (IGAs). MPI's social workers provided continuous training and support to help the women overcome challenges, ensuring their financial activities thrive and contribute to long-term self-reliance.

The impact of this initiative has been significant: women have improved their financial management skills, gained access to capital for business growth and developed sustainable income sources, benefiting their households through enhanced economic stability and increased self-sufficiency.

Life Skills Courses / Apprenticeship

MPI has been able to support young people by providing apprenticeship opportunities for those who have dropped out of school. The program connected youth with companies offering hands-on training in fields such as welding, tailoring, electrical installation, cosmetology and mechanics. In 2024, MPI partnered with reputable companies to train three girls in cosmetology and one boy in mechanics, ensuring practical real-world experience. Participants received ongoing support from Project officers and, upon completing their apprenticeship, earn certificates that improve their employability. MPI also offered life skills courses to its clients and staff, in collaboration with the Luigi Giussani Institute of Higher Education.



Adult literacy

MPI ran an adult literacy program designed to support women who had limited or no formal education. This initiative helped women learn to read and write in English and acquire basic mathematics skills, allowing them to communicate more effectively in everyday situations. The program enabled women to navigate essential tasks such as visiting hospitals, checking on their children at school and engaging with their community without the need for a translator.

SMART AGRICULTURE

The MPI Ssonde mixed farm carried out training programs that targeted youth aged 18-30, students from Luigi Giussani High School, and other community members, focusing on poultry and horticulture. These sessions, that were part of the SAY Project by AVSI Uganda, aimed to build technical skills while promoting MPI's educational philosophy, encouraging participants to recognize their value. The training also incorporated climate-smart agriculture, financial literacy, and life skills, in partnership with the Luigi Giussani Institute of Higher Education (LGIHE).

The impact of this initiative has been notable: participants gained practical agricultural skills, fostering self-reliance and entrepreneurship. Additionally, the farm's production not only supported MPI's Welcoming House but also contributed to the local economy by supplying food to consumers and retailers. This created a positive cycle of support for both individuals and the broader community.



CLIMATE CHANGE AND CLEAN ENERGY

Meeting Point International (MPI) is committed to transitioning to clean energy across its facilities. This year, solar panels were installed at the Welcoming House to improve energy efficiency. MPI is also working on expanding its clean energy initiative by securing funding for solar installations at the Tennis Court and headquarters. Additionally, MPI is promoting clean cooking and lighting solutions for its beneficiaries, partnering with service providers specializing in energy-efficient stoves and solar technologies. This initiative aims to educate women on sustainable alternatives, benefiting both the community and the environment.

THE INAUGURATION OF THE TENNIS COURT

At the beginning of the year, on the 8th of January, we opened up the new Meeting Point International (MPI) in Kireka for the women, men and children called “Tennis Court”. MPI has two spaces, Meeting Point Naguru and Kireka for the women to meet and have their different activities. The facility includes a main hall for events and meetings, a clinic for beneficiaries and an administration office with washrooms and toilets. During the opening ceremony MPI was graced by the presence of Mr. John Makoha (Country Representative of AVSI Uganda) and Honorable Hajjat Hadijah Namyalo (Senior Presidential Advisor).

Next phase: Development of an outdoor green multipurpose area

Considering the successful implementation of the first phase at the Tennis court, MPI is now seeking for funding for the realization of the second phase of the project, which consists in the development of an outdoor space for:

- Multipurpose playground that can accommodate football, tennis, basketball, and aerobic exercises among others;
- The facility will include a covering of the play ground area so that all recreational activities will be guaranteed in any weather condition;
- Beautification of the entire area with Hydroponics (an innovative vertical farming system), orchard and flowers;
- A rainwater harvesting system to diversify the water sources and complement on the national providers and to make the structure more environmentally sustainable;
- The construction of outdoor toilets, that will include 2 independent changing rooms (one for women and one for men), each with showers and bathrooms.

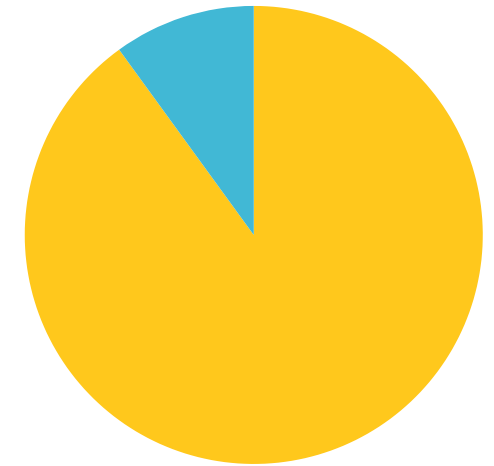




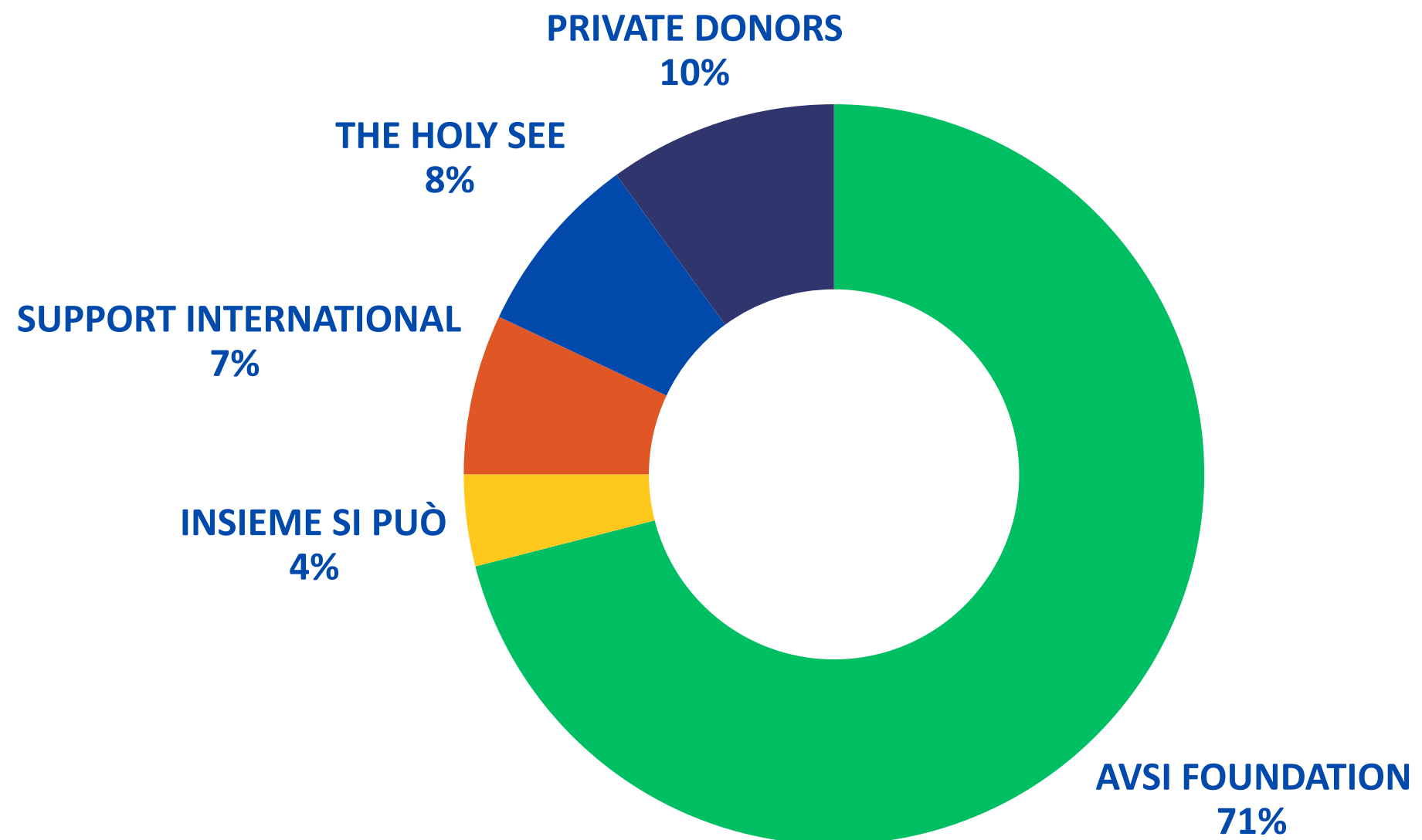
TOTAL FUNDS FROM OUR DONORS

504,902 €

PRIVATE DONORS
10%



INSTITUTIONAL DONORS
90%

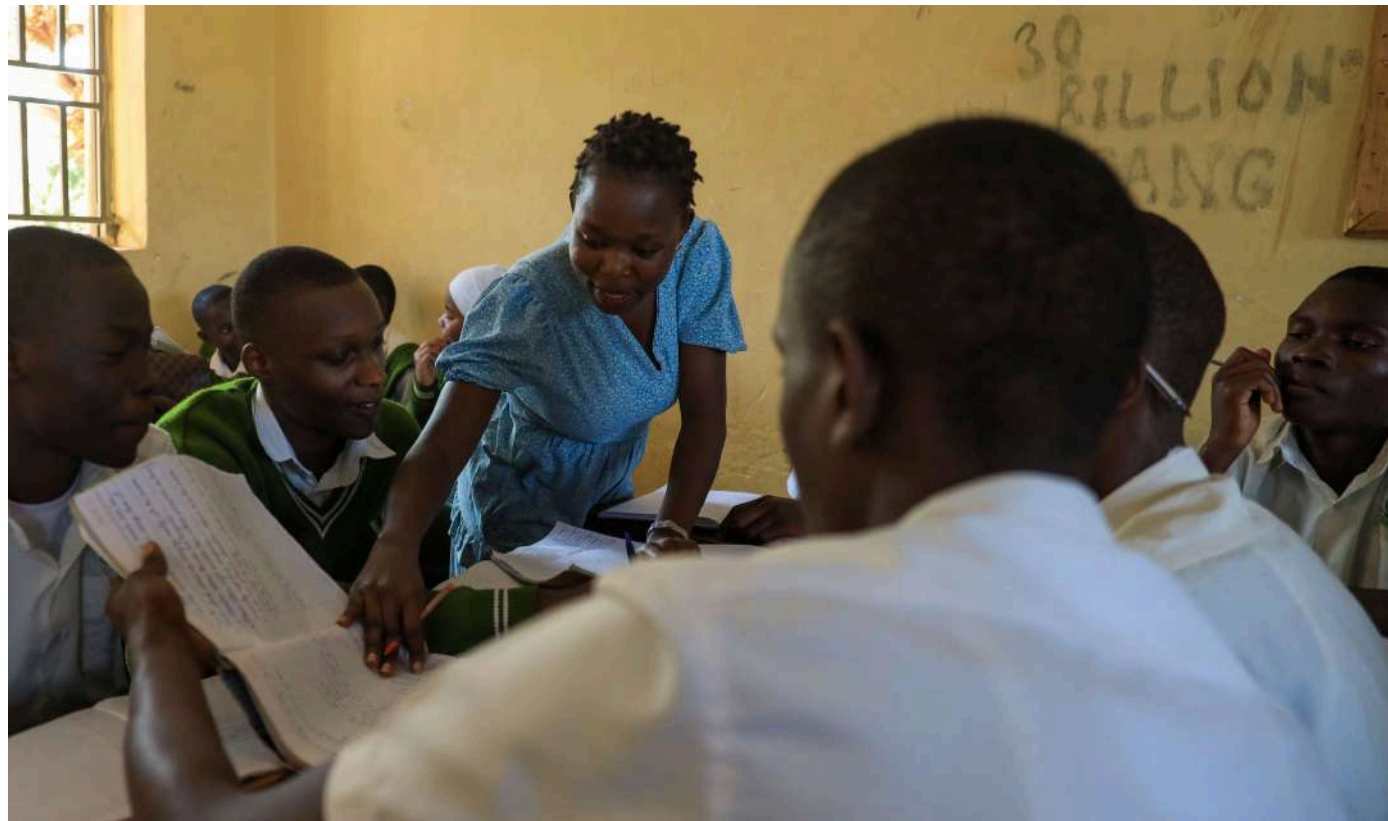


MAIN GOALS FOR 2025

- Enhance educational support through the payment of school fees and the provision of special classes, planning also for extracurricular classes such as sports events, music, dance and drama, and social clubs to support the holistic development of children and youth. Moreover, child protection dialogues and case management, regular follow up visits and psychosocial support will be offered to ensure a comprehensive accompaniment of our beneficiaries in their everyday lives;
- Enhance health-care support ensuring medical assistance and referrals at partner hospitals to the entire network of beneficiaries as well as medical surgeries for the most significant cases;
- A new health project will focus on raising awareness on eye health and providing eye screenings in support of many of our vulnerable children who often face sight-related issues and eye illnesses;
- MPI will raise awareness on the importance of environmental sustainability, by adopting clean energy, such as solar panels, in its premises, and engaging its beneficiaries in training on clean cooking and use of sustainable energy solutions;
- MPI will improve its infrastructures, planning to:
 1. Finalize its multipurpose playground area at the “Tennis Court”;
 2. Renovate the facility of the Welcoming House, in order to improve the living conditions of our children and their physical, mental, and emotional well-being. To ensure a comfortable and nurturing environment conducive to children’s growth, it will be necessary to repair or replace the broken beds, refurbish the boys’ quarters, improve and upgrade the playground area and ensure all sanitation facilities are functional;
 3. Install a borehole at Ssonde farm to ensure a constant provision of water that will be critical for irrigation and for all the other farm activities, including poultry and cuniculture, especially during the dry season. This will ensure the eco-sustainability of the entire facility in the long run.



STORIES OF HOPE 2024



“Teaching is not just a profession; it is a calling. I feel fortunate for having discovered this early in my life. Knowing that I am important and I have a value are the cornerstones of my relationships with students and their parents. What brings me joy is hearing my students’ say: ‘Thank you for helping me love myself’”.

Esther Amito

“Everyone needs a place where they belong and this place will always help you overcome and stand strong in the darkest of times. When we embrace our inner strength we can bloom yet again and I hope everyone finds ‘A place where they belong’”.

Gorreti Wandera





Meeting Point International
Mutungo - Kitintale
P.O.Box 21261
Kampala, Uganda

OUR CONTACTS



Telephone: +256 714193917
+256 414 222 698

Email: info@meetingpoint-int.org or
meetingpointsocial@gmail.com

Social Media: Meeting Point International



SCAN ME

